

AUTUMN
WINTER
COLLECTION
2017.

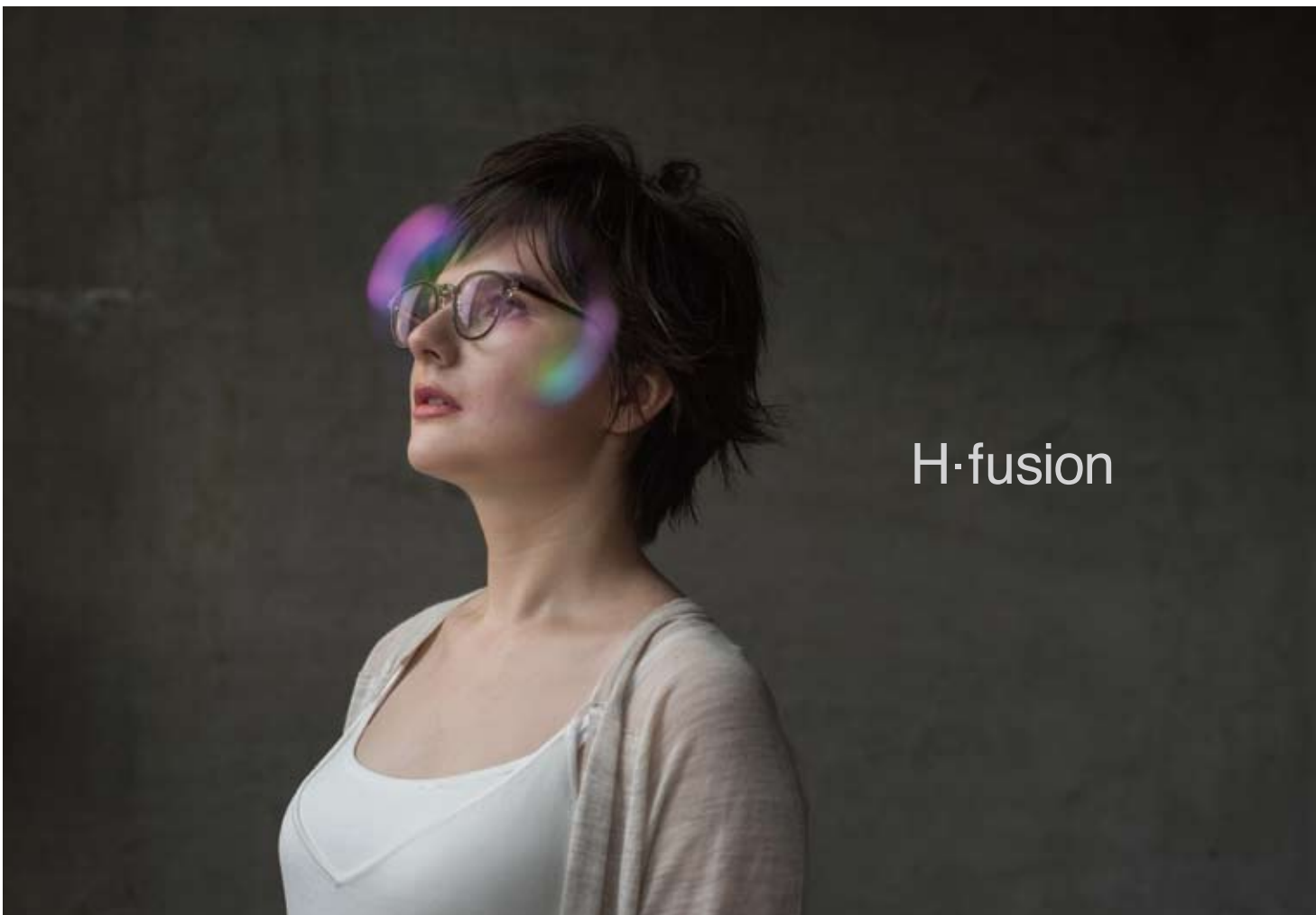
IOFT 2017
10/11-10/13
Tokyo Big Sight



AUTUMN
WINTER
COLLECTION
2017.

IOFT 2017
10/11-10/13
Tokyo Big Sight





H·fusion

*Make it extraordinary,
the next generation's standard.*

Sometimes we can say a great deal, by saying nothing at all.

The same jacket the same dress the same watch, when worn will reveal the unique character of the wearer. Clothes are an extension of self expression.

As fashions and styles shift and modernize over time, H-fusion eyewear continues to bring out the infinite expressions of self for each wearer. That is how, we hope, these eyeglasses emphasize each wearer's individuality.

We take inspiration from past styles, understanding and adapting them in modern ways, always aspiring to perfection in both design and craftsmanship.

Not only will you find beautiful form and delicate detail but the fusion of classic and modern that is made in Japan. This is H-fusion.



AUTUMN
WINTER
COLLECTION
2017.



spec ēspace

The longing for space. Release, invitation to infinity.

spec espace means the structure and performance, such as "Space and Space".
spec espace is glasses that create the space by the frame.
Form is naturally wraps the face, show us the other one of the facial expression.
In particular, the impression from the side might "mode" it was not until now.

that another commitment spec espace is a pure "made in Japan".
Fukui Prefecture Sabae City, place of production of glasses, which boasts the world.
In each of the factory, we are told elaborate glasses technology.
The spec espace, such outstanding craftsmanship spirit is alive unbroken.

When you create endless space, people will pursue draws a dream.
Form in the "futuristic" a "spatial", "mode".
spec espace is glasses that space that extends to infinity, the cosmic expanse in shape.

